

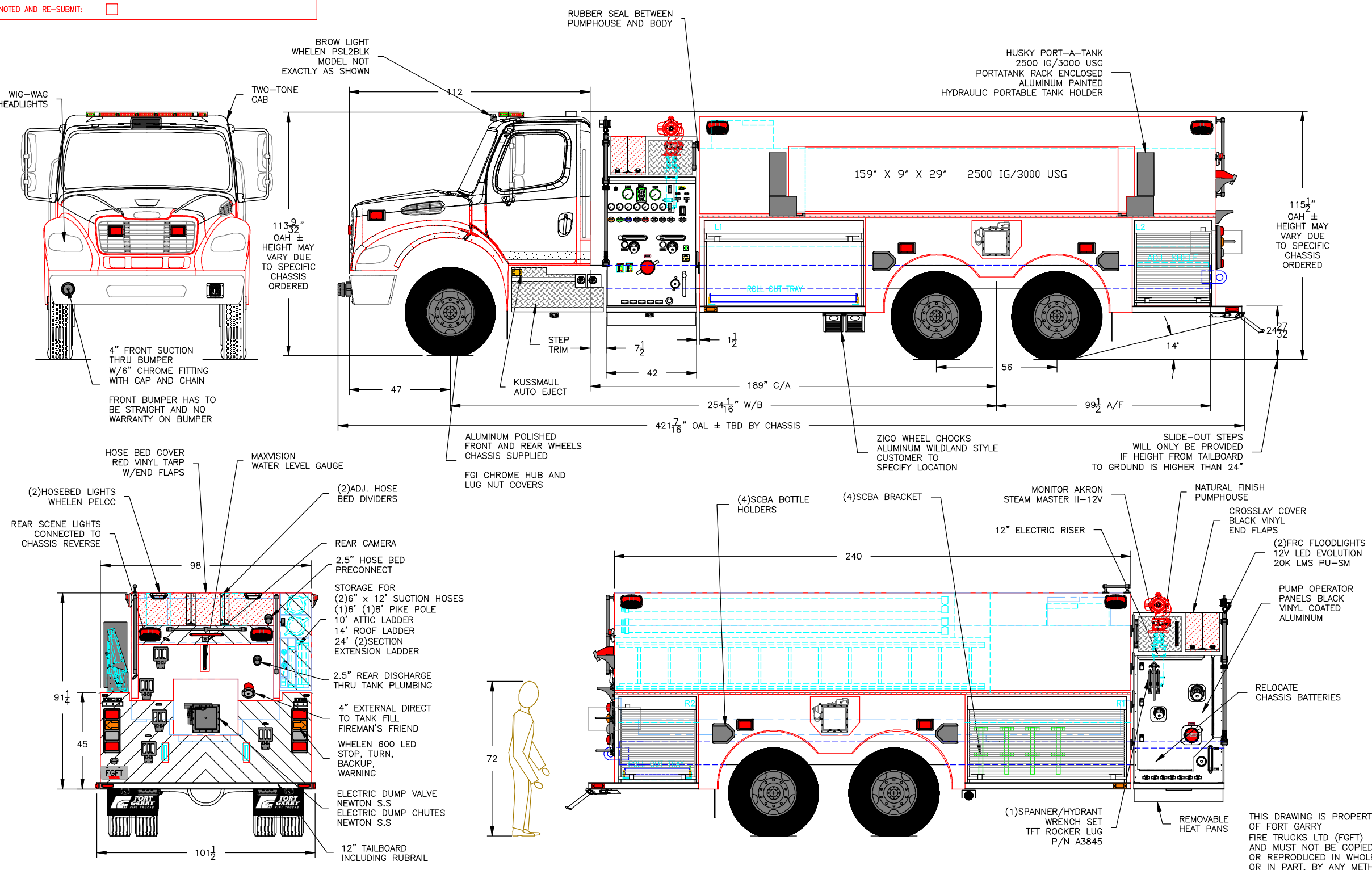
CUSTOMER APPROVAL	IF NOT RETURNED TO FGFT BY THE DATE INDICATED BELOW, WE WILL PROCEED WITH FABRICATION AS PER THE DRAWING
SALES SIGNATURE:	
CUSTOMER SIGNATURE:	
DATE:	
RETURN TO FGFT BY:	DATE: DEC. 17, 2019
REVIEWED BY:	
REVIEW DATE:	
ACCEPTED AS IS:	<input type="checkbox"/>
ACCEPTED WITH REVISION NOTED:	<input type="checkbox"/>
REVISE AS NOTED AND RE-SUBMIT:	<input type="checkbox"/>

BODY TYPE: EXTRUDED ALUMINUM
TANK TYPE: WET SIDE

DOC. NO. : E018-1 DRAWING TEMPLATE
REV. C 2017-02-05

SPECIFICATION

- CHASSIS:**
-FREIGHTLINER 112 M2 SBA REGULAR CAB
-64,000 LB GVWR; 18,000 LB FRONT / 46,000 LB REAR
-DIESEL ENGINE, DETROIT DD13 12.8L, 450EV HP
-AUTOMATIC TRANSMISSION, ALLISON 4000 EVS
-STABILITY CONTROL ESC CHASSIS SUPPLIED
- PUMP:**
-HALE MIDSHIP QMAX 1500
-1500 USGPM AT 150PSI
-FOAM SYSTEM HALE FOAMLOGIX 2.1 INJECTION CLASS A
-THIRD PARTY CERTIFICATION MEETING NFPA 1901-2016 EDITION
- PLUMBING:**
-2 x 6" SUCTION (1)ROAD (1)CURB BOTH MIV ELECTRIC
-2 x 2 1/2" GATED SUCTION, (1)ROAD (1)CURB
-3 x 2 1/2" DISCHARGE, (2)ROAD (1)REAR
-1 x 2 1/2" DISCHARGE (W/ 3" NST), (1)CURB
-1 x 2 1/2" DISCHARGE HOSE BED PRECONNECT
-2 x 1 1/2" CROSSSLAY'S -FOAM
-1 x 4" STORZ DISCHARGE (3" PLMBNG) W/ SLO CLOZ (1)CURB
-1 x 4" STORZ SUCTION, (1)FRONT AKRON ELECTRIC
-1 x 4" STORZ EXTERNAL TANK FILL FIREMANS FRIEND, REAR
-1 x 3" MONITOR STAND PIPE W/ SLO CLOZ
-2 x 4" TANK TO PUMP, W/4" BUTTERFLY VALVE AIR
-1 x 2" TANK FILL AKRON
- TANK:**
-3000 USG WATER TANK
-30 USG SINGLE INTERNAL FOAM TANK
- BODY:**
-WET SIDE TANKER ALUMINUM LOW/LOW
-BODY UNDERCOATING - CORASHIELD
- EMERGENCY EQUIPMENT/ACCESSORIES:**
-LIGHT BAR 56" LED JE2NFPA
-SIREN CONTROL
-100W SPEAKER
-2 x FLOOD LIGHTS HALOGEN
-2 x GRILLE LIGHTS RED
-6 x INTERSECTION LIGHTS RED
-4 x SIDE UPP. WAR. LIGHTS SPLIT RED/CLEAR
-2 x REAR LOW. WARN. LIGHTS RED-TAILLIGHTS
-2 x REAR UPP. WAR. LIGHTS SPLIT RED/CLEAR
-6 x GROUND LIGHTS LED
-AIR CHARGING PROVISION
-BATTERY CHARGING PROVISION
-ANTENNA MOUNT
-10' ATTIC LADDER
-14' ROOF LADDER
-24' (2)SECTION EXTENSION LADDER
-(2) 6" x 10' SUCTION HOSE
-(1) 6" STRAINER BARREL KOCHEK
- MODEL:**
WHELEN JUSTICE 56"
WHELEN CEN COM
SAPPHIRE W/ MIC
WHELEN SA315P
UNITY AG-2 12V
WHELEN 600 LED
WHELEN 600 LED
WHELEN M9V2R LED
WHELEN 600 LED
WHELEN M9V2R LED
WHELEN 4" ROUND
KUSSMAUL PUMP
PLUS 1200
DUO SAFETY 585-A
DUO SAFETY 775-A
DUO SAFETY 1200-A



COMPT.	COMPARTMENT FRAME DIMENSIONS
L1	74W x 40H x 13.5/26D
L2	36W x 40H x 13.5/26D
R1	74W x 40H x 13.5/26D
R2	36W x 40H x 13.5/26D

- THE DRAWING IS FOR REFERENCE PURPOSE, ONLY. THE DRAWING MAY OR MAY NOT SHOW ALL ITEMS AS DESCRIBED IN THE WRITTEN DETAILED SPECIFICATION.
- INCLUSION OF AN ITEM ON THE DRAWING DOES NOT CONSTITUTE INCLUSION OF THAT ITEM WITH THE FINAL DELIVERY OF THE UNIT. SPECIFICATION SHALL BE FINAL AUTHORITY TO BE DETERMINED WHAT IS SUPPLIED ON THE APPARATUS.
- THE EFFECTIVE DOOR OPENING FOR ROLLUP DOORS WILL BE REDUCED APPROX. 10" IN HEIGHT, 2" IN DEPTH AND 2" IN WIDTH FROM SHOWN FRAME OPENINGS AND 2" IN HEIGHT, 3" IN DEPTH AND UP TO 4" IN WIDTH FOR PAN DOORS. DIMENSIONS TOLERANCE ± 1/4"
- PUMP RATING AND TANK CAPACITY ARE SHOWN AS NOMINAL VALUES. THE ACTUAL VALUES MAY VARY.
- CHASSIS GVWR SHOWN IS THE MINIMUM REQUIRED FOR STANDARD BODY DEPENDING OF OPTIONS, GVWR MAY NEED TO BE INCREASED.
- COMMERCIAL OEM CAB STEPS MAY NOT MEET ULG STANDARD. SELECT CUSTOM STEPS WHEN REQUIRED
- OVERALL HEIGHT IS IN LOADED CONDITION, UNLOADED HEIGHT MAY BE 4" ABOVE HEIGHT SHOWN. AFTER TRUCK IS COMPLETED ADDITIONAL STEPS MAY BE REQUIRED TO MEET THE STANDARD.
- DIMENSIONS SHOWN ARE APPROXIMATE AND ARE SUBJECT TO CHANGE AS MAY BE FOUND NECESSARY DURING DESIGN. DO NOT SCALE DRAWING.
- MINOR DETAILS AND REFLECTIVE STRIPING ARE NOT SHOWN.

C	REVISED CUSTOMER SIGN OFF DWG	JAR	03 DEC 2019
B	CUSTOMER SIGN OFF DRAWING	JAR	01 AUG 2019
A	CRM DRAWING		
REV	DESCRIPTION OF CHANGE	BY	DATE

FORT GARRY
FIRE TRUCKS
WWW.FGFT.COM
WINNIPEG, MANITOBA, CANADA 1-800-565-3473

DESCRIPTION:	MOHAWK F.D.		
SCALE:	DWG. BY:	CHK. BY:	
1:52	TV		

MODEL:	SHEET:
AFTTS25H6	1 OF 1
DATE:	DWG. NO. :
16 OCT 2018	J0062